

**COMUNI DI
ROSARNO - FEROLETO DELLA CHIESA
LAUREANA DI BORRELLO - RIZZICONI SERRATA
SAN PIETRO DI CARIDA - SAN CALOGERO**
(Provine di Reggio Calabria e Vibo Valentia)
PIANO STRUTTURALE ASSOCIATO (P.S.A.)
(L.U.R. 16 aprile 2002, n. 19)



PROFESIONISTI IN CARICATI
 arch. Fabio A. Nasso - Capogruppo
 arch. Giuseppe Lombardo
 arch. Salvatore Sellano
 arch. Salvatore Falli
 pian. terr. Rocco Panatta
 arch. Rocco Viragata
 arch. Francesco Mammola
 ing. Ernesto Menestieri

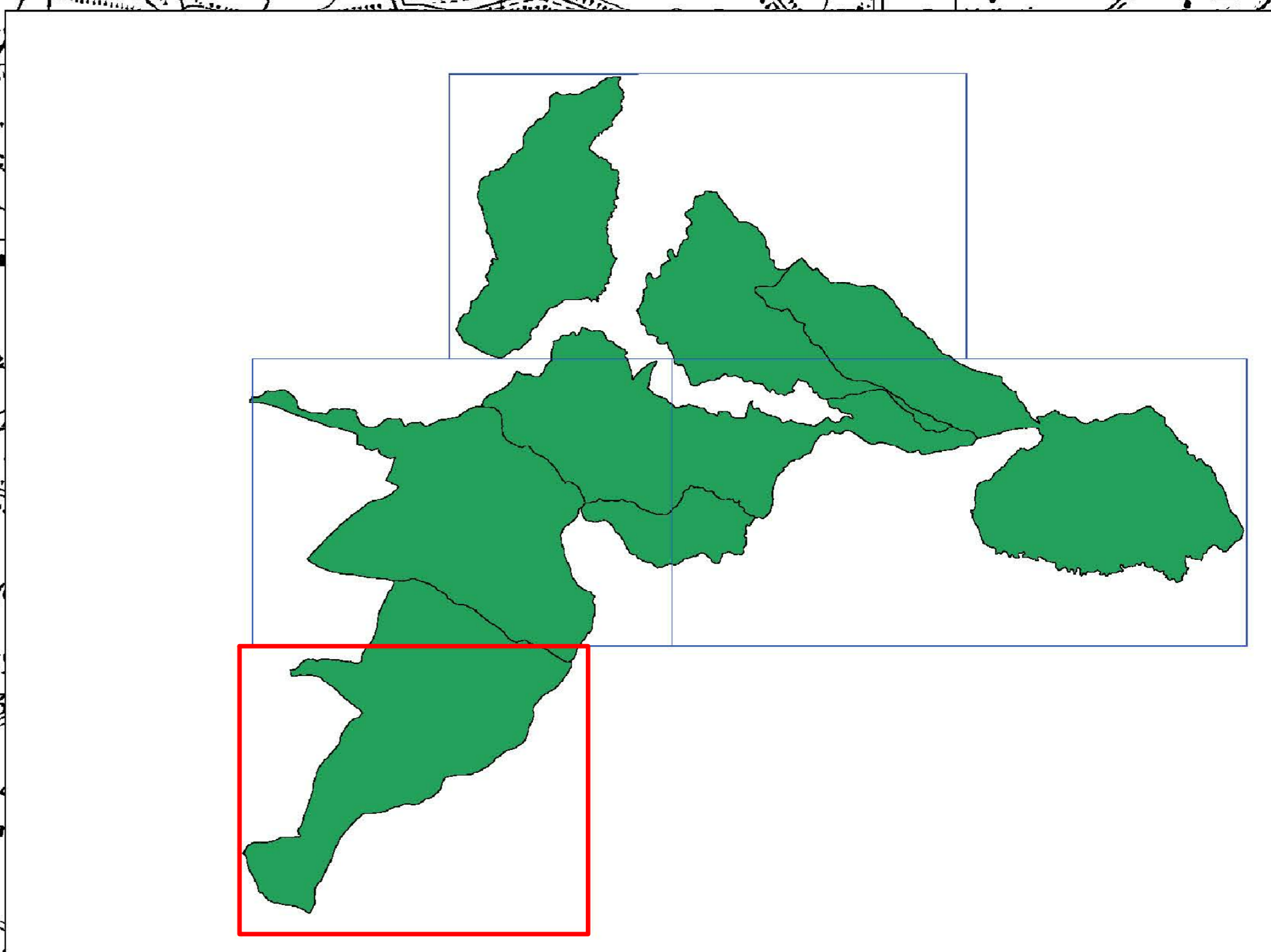
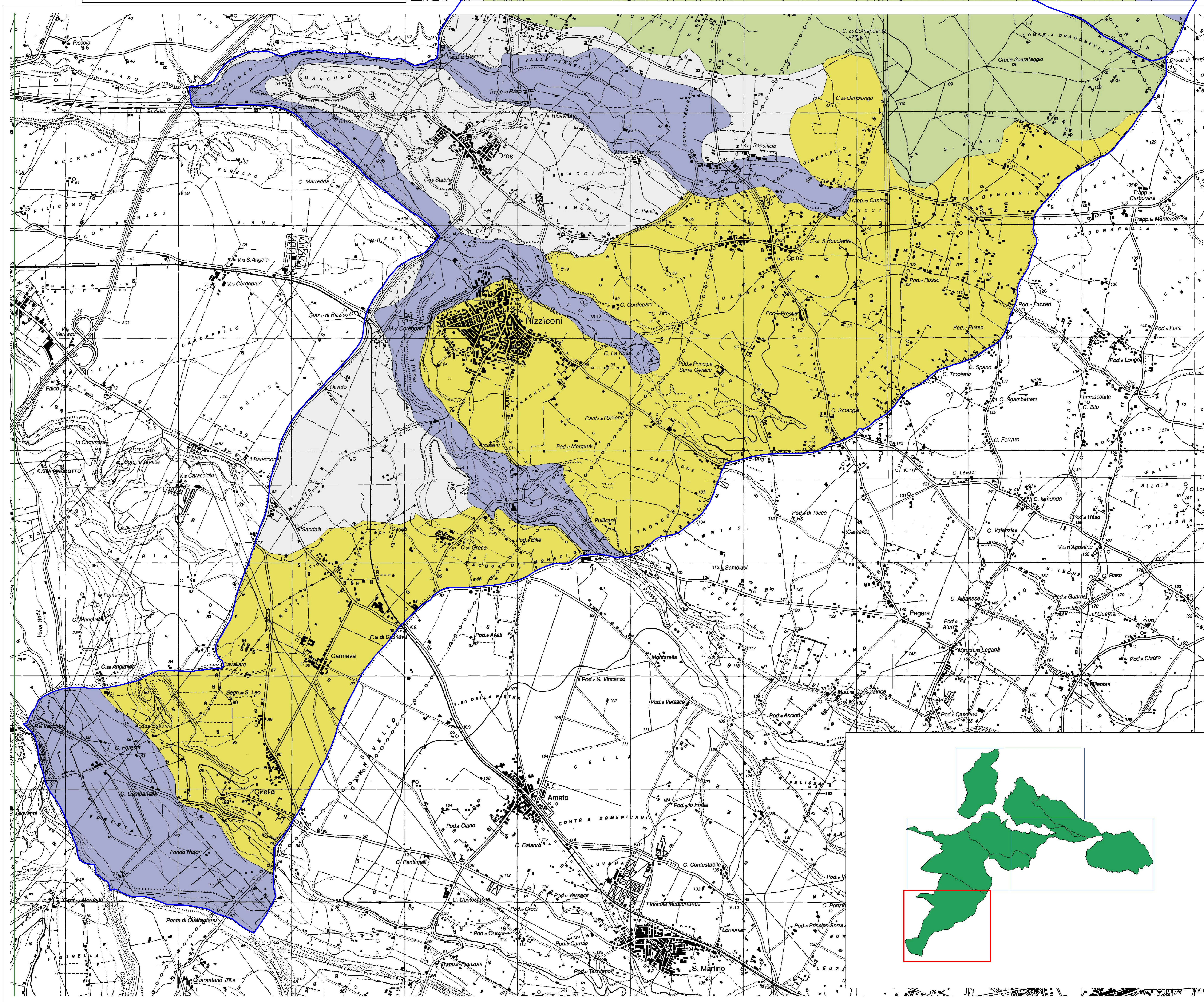
RESPONSABILE DEL PROCEDIMENTO
 ing. Alessandra Campiti

prof. geol. Giuseppe Mandaglio
 ing. Pasquale Poma
 dott. agr. Tommaso Calabro
 architet. Maddalena Sica
 architet. Francesca Pizzi
 dott. soc. Antonio Nasso

SSA TAV 2d	QUADRO CONOSCITIVO TERRITORIALE COMUNI DI ROSARNO, FEROLETO DELLA CHIESA, LAUREANA DI BORRELLO, RIZZICONI, SAN CALOGERO, SAN PIETRO DI CARIDA, SERRATA. INDAGINI AGROFORESTALI-AGROPEDELOGICHE	
	RAPPORTO DI SCALA 1:10.000	DATA

CARTA DEI SUOLI

- Legenda**
- 11.4 - Humic Dystrudept, Humic Psammentic D.
 - 11.6 - Humic Dystrudept, Humic Psammentic D.
 - 12.2 - Typic Dystrudept, Humic Dystrudept
 - 12.4 - Humic Lithic Dystrudept, Humic Dystrudept
 - 13.4 - Typic Dystrudept, Humic Psammentic D.
 - 13.5 - Humic Dystrudept, Typic Xerothents
 - 3.1 - Typic Xerosamments
 - 3.2 - Hiventic Haploxerolls, Typic Xerothents
 - 3.3 - Psammentic Haploxerolls
 - 3.4 - Psammentic Haploxerolls
 - 3.5 - Typic Hapludands, Typic Hapludalfs
 - 3.7 - Typic Hapludalfs
 - 8.10 - Typic Eutrudept, Typic Xerothents
 - 8.11 - Typic Haploxerepts, Lithic Xerosamments
 - 8.2 - Typic Lithfluents
 - 8.4 - Typic Hapludalfs
 - 8.6 - Typic Eutrudept, Typic Dystrudept
 - 8.7 - Vertic Eutrudept, Typic Eutrudept
 - 8.9 - Typic Xerosamments
 - 9.11 - Vertic Eutrudept, Aquic Eutrudept
 - 9.5 - Ulitic Hapludalfs, Typic Hapludands
 - 9.7 - Lithic Xerothents, Typic Eutrudept
 - 9.8 - Vertic Eutrudept, Aquic Eutrudept
 - 9.9 - Typic Hapludalfs, Typic Eutrudept
 - contine di provincia



P.S.A.: ROSARNO - FEROLETO DELLA CHIESA - LAUREANA DI BORRELLO - RIZZICONI - SAN CALOGERO - SAN PIETRO DI CARIDA - SERRATA